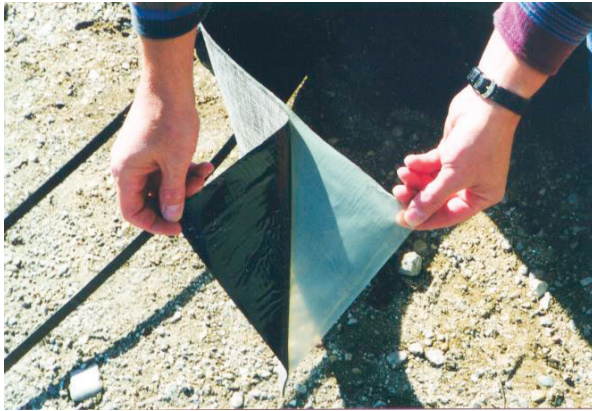
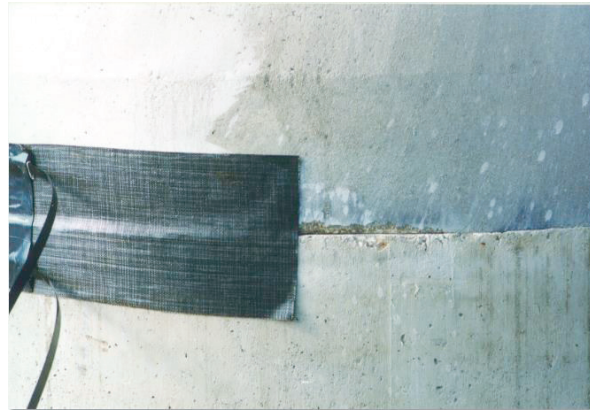


**“CretexWrap” External Joint Seal  
Installation Instructions**

**1. Surface preparation:** Inspect the outside surface of the joint. Brush and/or repair surface as needed to ensure there is no loose or foreign materials or voids that would prevent full surface contact with the mastic seal.



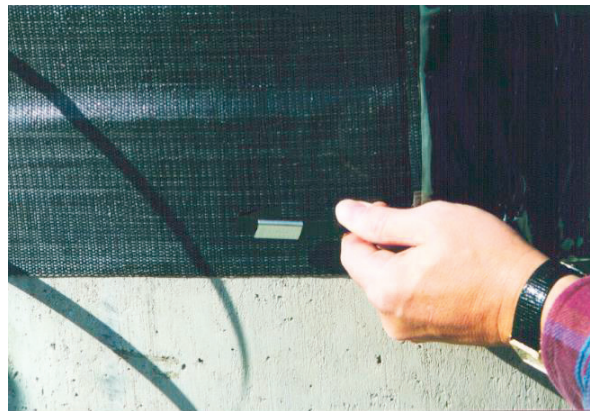
2. Remove a portion of the protective plastic film from the back side of the seal wrap to expose mastic.



3. Place the exposed mastic side of the wrap against the joint making sure to center the seal over the joint.

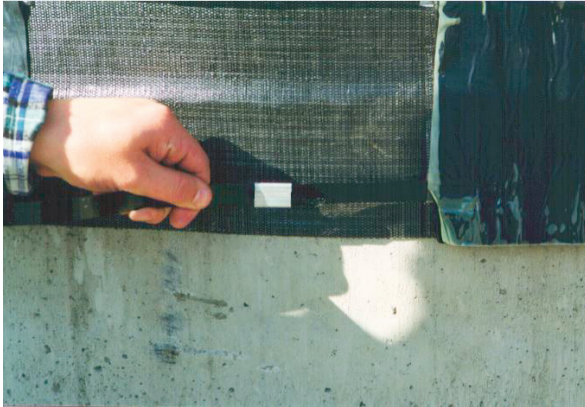


4. Remove the remaining protective film as you continue to place the wrap (keeping it centered on the joint) until the entire joint is wrapped and the ends overlap.

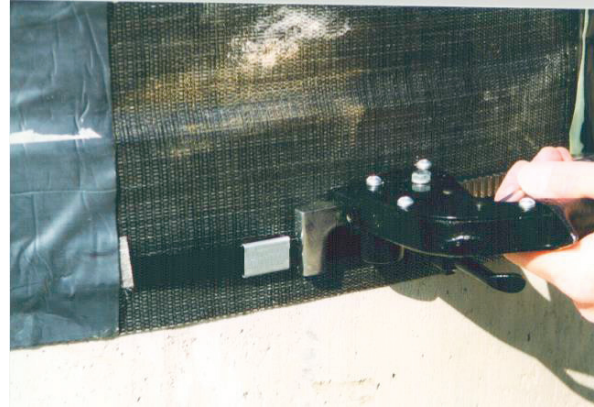


5. Bend the end of the band back and under the clip.

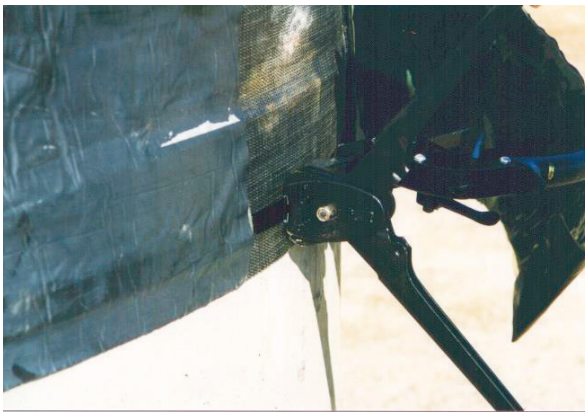




6. Thread the other end of the band through the clip on top of the band end.



7. Thread the top band through the Tensioning Tool and snug the pusher bar against the clip. Squeeze the handles to tighten the band as much as possible.



8. Use Crimper Tool to crimp the clip and lock the band in place. Break off the excess band next to the clip by moving the Tensioning Tool back and forth.



9. Remove the protective plastic film from the back of the closing flap.



10. Place closing flap over the exposed straps to complete the installation.